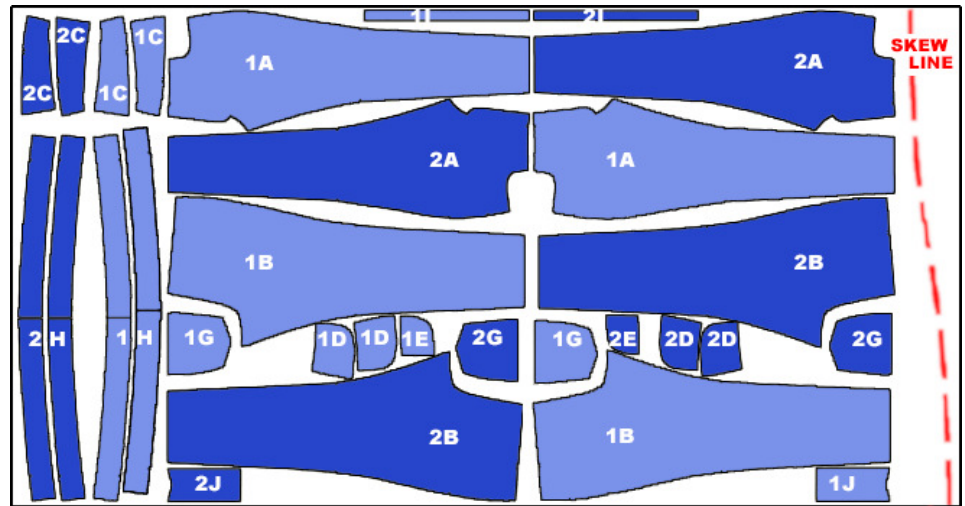


GINGER JEANS

consolidated instruction
to minimise
of Thread Changes

<http://overflowingstash.com/2018/04/07/closet-case-gings-high-mid-rise/>



	press	<ul style="list-style-type: none"> • Coin Pocket - top interfacing • Back Pockets - top interfacing • Back Pockets - design interfacing • Fronts - fly extension interfacing • Waistband - interfacing • Waistband & Waist Facing - button & button holes interfacing 			press	<ul style="list-style-type: none"> • Fronts - crotch SA towards L Front • R Front - Zipper seam open • Backs - crotch SA towards L Back • Belt loops ends $3/8" = 2-1/4"$ loop lengths
	stitch	<ul style="list-style-type: none"> • Front Pocket F2s > Fronts pocket opening • Fly Shield - bottom (inside, trim, flip) • Yokes > Backs • Waist Facing - bottom fold guideline • Waistband > Waist Facing – top 			2 topstitch	<ul style="list-style-type: none"> • R Front - Zipper seam edge • Fronts - CF - crotch (single line) • Backs - crotch
	overlock	<ul style="list-style-type: none"> • Coin Pocket - top • Back Pockets - top • L Front - fly extension • Yokes > Backs • Belt Loop - length 1 side 			5 stitch	<ul style="list-style-type: none"> • Zipper left teeth > L Front fly extension • Zipper left edge > L Front fly extension
	press	<ul style="list-style-type: none"> • Coin Pocket - top, straight side • Fronts pocket opening • Back Pockets - top, sides, bottoms • Yokes - Backs SA towards Backs • Waist Facing - bottom • Waistband - right side out • Belt Loop - width into 3rds 			6 topstitch	<ul style="list-style-type: none"> • L Front fly curve - align guide $1/2"$ below zipper stop, 2nd line $1/4"$ inside line - both catching left fly extension • Fronts - crotch 2nd line (from fly curve bottom)
1	topstitch	<ul style="list-style-type: none"> • Coin Pocket - top • Back Pockets - top • Back Pockets – design • Fronts pocket opening • Yokes - Backs seams • Belt Loops & Cut Belt loops into $5 \times 3-1/2"$ • Coin Pocket - straight side > Pocket Facing • Back Pockets > Backs 			overlock	<ul style="list-style-type: none"> • Fly Shield open side > R Front fly extension (align Fly Shield folded edge to L Front fly extension edge)
	overlock	<ul style="list-style-type: none"> • Pocket Facings - curved edge 			topstitch	<ul style="list-style-type: none"> • Bar tack L Front fly curve bottom + base of straight line
2	stitch	<ul style="list-style-type: none"> • Front Pocket Facings > Front Pocket F1s • Front Pocket F1s > Front Pocket F2s – bottom • Front Pockets > Fronts - baste along fly-top-side • Fronts - crotch + baste CF opening & clip SA at base of CF opening • Zipper right teeth > R Front fly extension (Align zipper face down left edge to CF - teeth $3/8"$ max from CF, zipper stop $1/2"$ from bottom of R Front fly extension) • Backs - crotch 			7 stitch	<ul style="list-style-type: none"> • Fronts > Backs - inseams
	overlock	<ul style="list-style-type: none"> • Fronts - crotch • Backs - crotch 			overlock	<ul style="list-style-type: none"> • Fronts > Backs - inseams
					press	<ul style="list-style-type: none"> • Front - Back inseams SA towards Fronts
					8 topstitch	<ul style="list-style-type: none"> • Front - Back inseams (single line)
					9 stitch	<ul style="list-style-type: none"> • Fronts > Backs - side seams • CHECK FIT before proceeding to next step
					overlock	<ul style="list-style-type: none"> • Fronts > Backs - side seams
					press	<ul style="list-style-type: none"> • Front - Back side seams SA towards Backs
					10 topstitch	<ul style="list-style-type: none"> • Front - Back side seams (single lines) to bottom of pocket • Bar tack bottom of topstitch
					press	<ul style="list-style-type: none"> • Jeans Hems double $1/2"$ fold
					topstitch	<ul style="list-style-type: none"> • Jeans Hems (single line)
					11 stitch	<ul style="list-style-type: none"> • stay stitch Jeans Waist • shorten zipper teeths & tape if needed • Wasitband bottom > Jeans Waist, then check Waistband bottoms align when zipped up, correct if needed
					press	<ul style="list-style-type: none"> • Waistband SA towards Waistband • If grading, only trim Jeans Waist (not Waistband)
					stitch	<ul style="list-style-type: none"> • Wasitband CFs
					12 topstitch	<ul style="list-style-type: none"> • Waistband (single line)
					glue	<ul style="list-style-type: none"> • Belt Loops > Waistband
					topstitch	<ul style="list-style-type: none"> • Belt Loops > Waistband (bar tacks if possible) • Buttonhole
					attach	<ul style="list-style-type: none"> • Button • Rivets